



FIG. 1. TV education courses. Workshop for TV courses is the main studio professionally equipped with RCA TK-11 Studio Cameras, microphone and lighting equipment.

STATE UNIVERSITY OF IOWA USES RCA EQUIPPED STUDIO AS HUB OF TV TEACHING CENTER

*Three Studio Cameras, Audio and Video Control Equipment
Provide Closed-Circuit Facilities for TV Education Courses and for
Evaluation of Teaching Via TV*

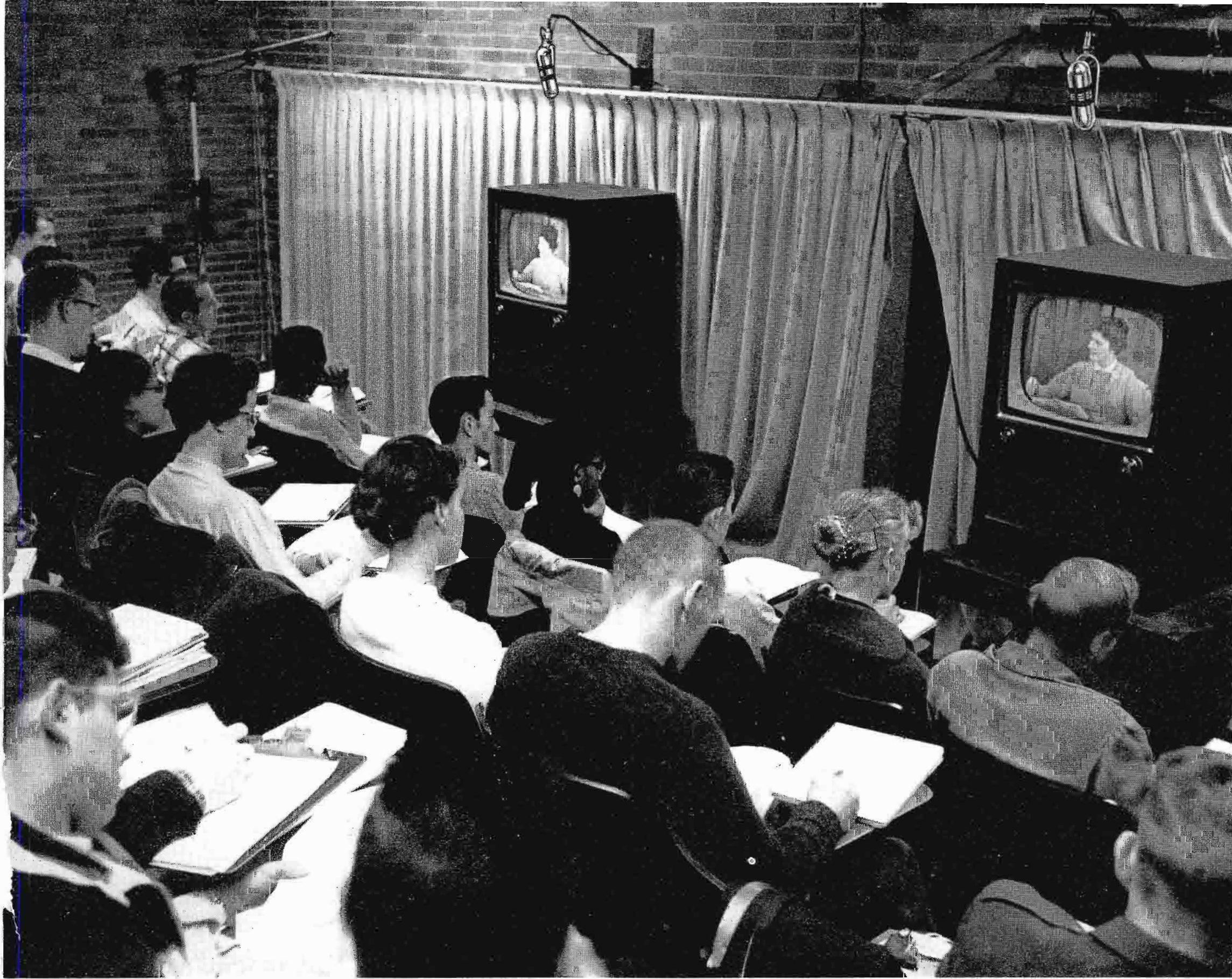


FIG. 2. Evaluation of teaching via TV. Students in American Government participate in TV discussion class. Shown on the receivers is a member of the studio discussion group.

by DR. SAM L. BECKER, *Director of Television*

As told to

MILES G. MOON, *Broadcast News Editorial Staff*

Hub of the State University of Iowa Television Teaching Center is a fully equipped television studio used for TV education courses and for evaluation of teaching via TV. While the Center's operation is confined to closed-circuit applications, standard broadcast equipment is used throughout. The studio is equipped with three RCA studio cameras, type TK-11, and serves as a working laboratory where students can learn to handle every phase of television production from script writing and operation of equipment to directing. Here and in the RCA-equipped studio control room students in television

gain familiarity and working experience with the latest electronic equipment in preparation for their careers in television broadcasting.

These facilities, originally set up for TV courses, have been ideally suited to the University's present research in teaching via television. Aware of the rising student enrollment problem, an Iowa University group is conducting studies of the discussion method of teaching to large groups—utilizing closed-circuit television as the medium of communication between a teaching studio and viewing classrooms.

TV Center Facilities

A section of the old Iowa field house provides quarters for the TV Teaching Center. Layout of facilities is shown in Fig. 3 on which the principal teaching areas are labeled. Other rooms provide office, storage and miscellaneous work space.

Main Studio

Center of television instruction at Iowa is the main studio. One of the largest in the nation, measuring 45 by 90 feet, the studio is equipped, as shown in Fig. 4, with three TK-11 Studio Cameras (mounted on a 12-foot crane, a panoramic dolly and a pedestal), a microphone perambulator and boom, and complete lighting equipment. The large floor area accommodates many sets for student productions, for kinescope productions and for a television teaching studio.

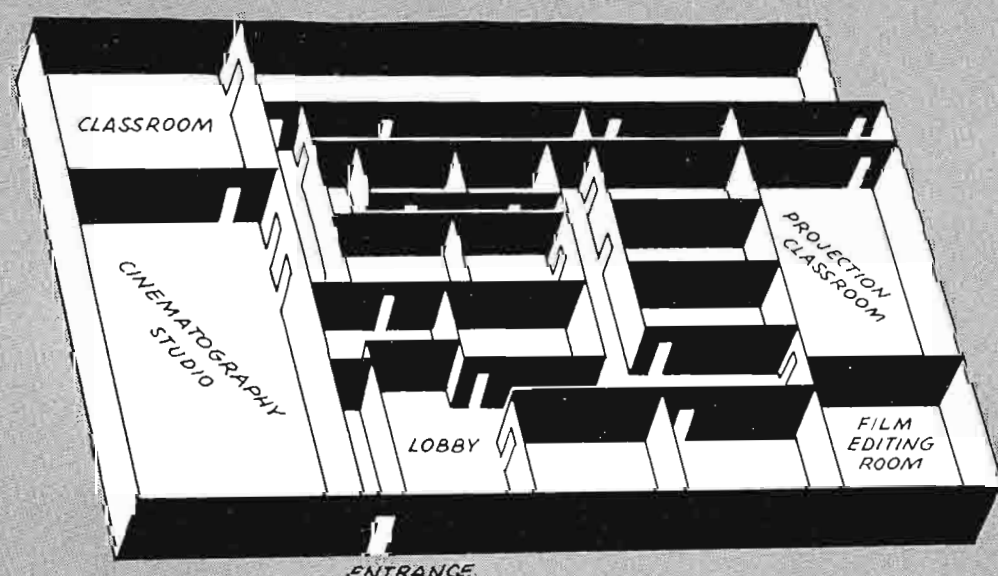
Classroom and University productions as well as TV-discussion classes are serviced by student crews in the main studio. Each week students rotate jobs—one week serving as floor manager, the next week as

cameraman—and so on until each student learns to operate every piece of equipment.

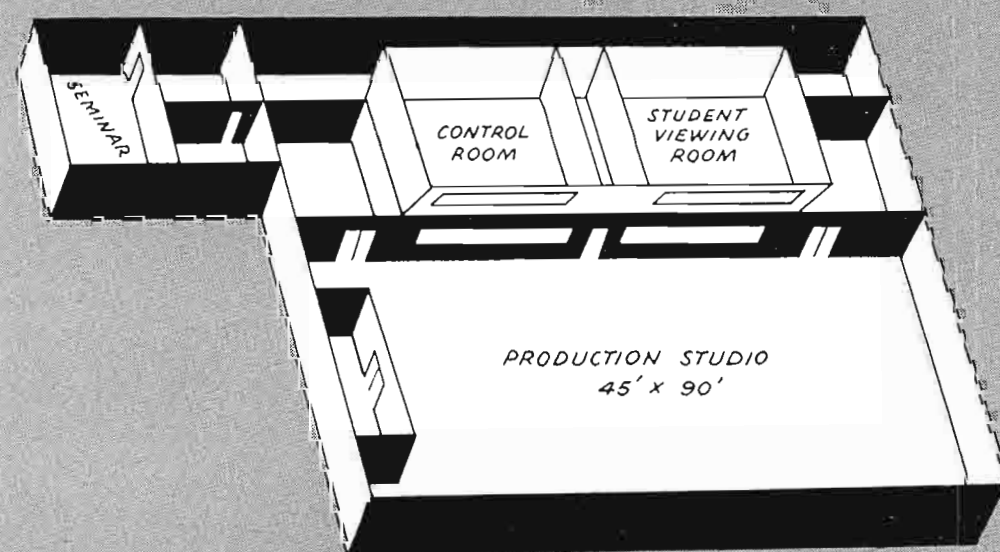
Control Room

In learning to operate all phases of production for class projects, students also rotate assignments in the control room, shown in Fig. 5. Here they take over directing and video, audio and lighting control jobs.

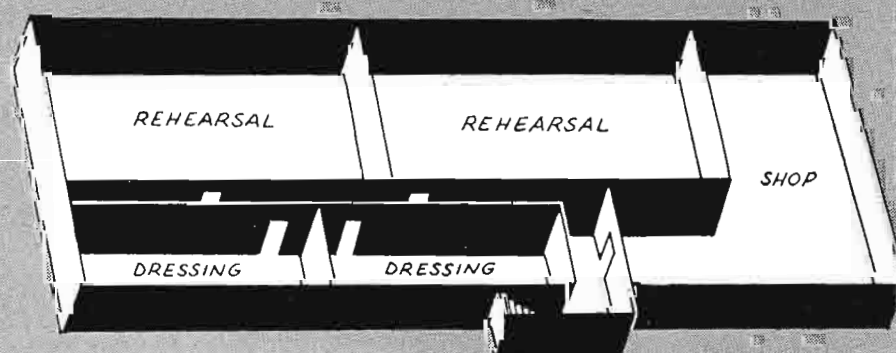
The control room is located a full story above the studio floor and has a full view of the studio. An elevated platform at the rear of the control room provides the program director with a clear view of all control room operations as well as the studio floor. The RCA-equipped control room includes a BC-2B Audio Console and BCM-11A Auxiliary Mixer, TS-5A Switcher, control equipment for three TK-11 Studio Cameras, four TM-6 Master Monitors and five TM-2 Utility Monitors. A TG-1A Sync Generator, power supplies and other terminal equipments are mounted in five BR-84 Cabinet Racks. Lighting terminal boxes, patch panels and dimming controls are also installed in the control room.



FIRST FLOOR



STUDIO (2ND AND 3RD FLOORS)



BASEMENT

FIG. 3. Cutaway view of old Iowa field house showing the location of TV facilities. Rooms which are not labeled provide office space for teaching center staff.

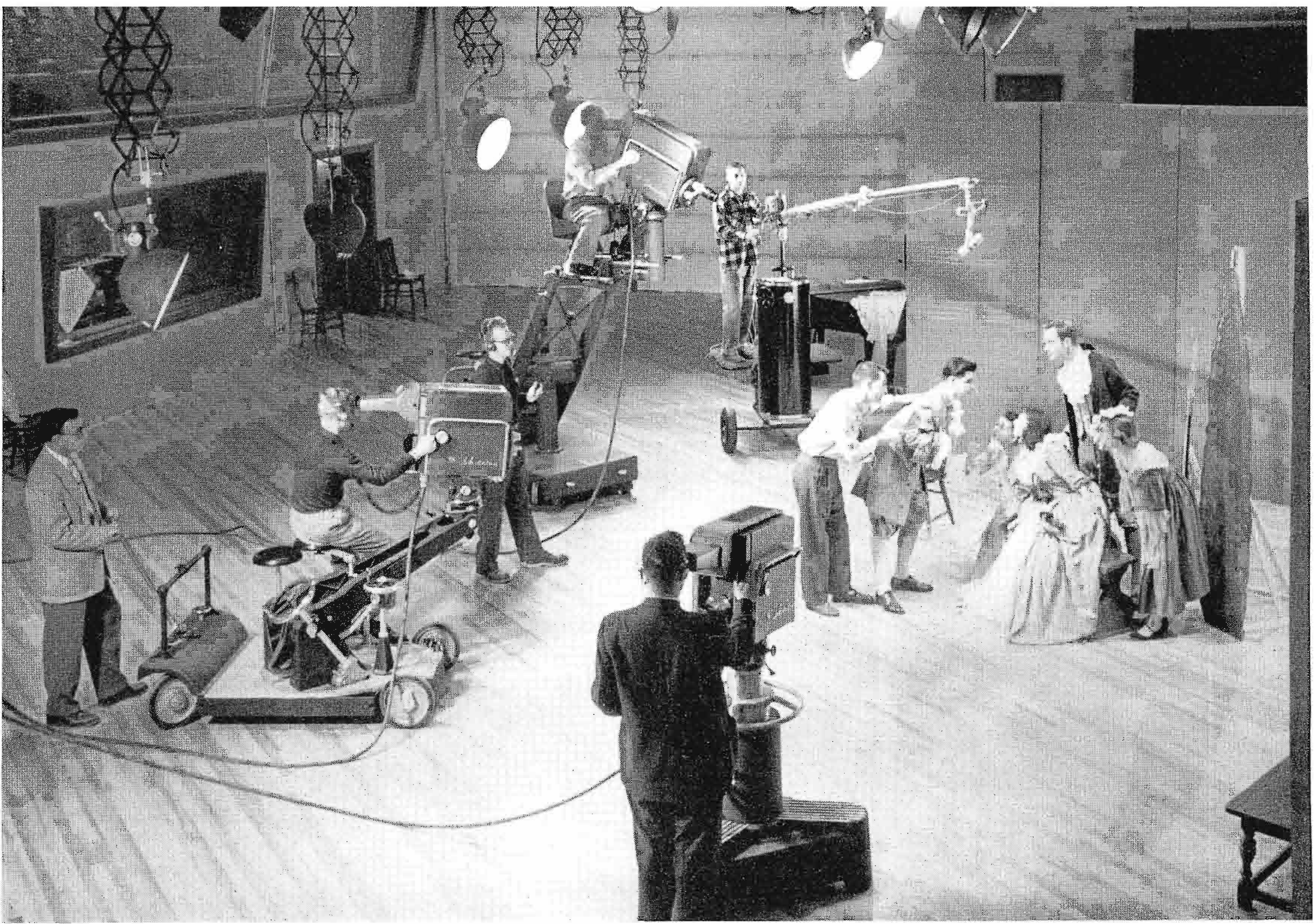


FIG. 4. View of the 45 by 90 foot television studio. By using various types of professional equipment on dollies, booms, and pedestals, students gain working knowledge of broadcast station operations to aid them in their future careers.

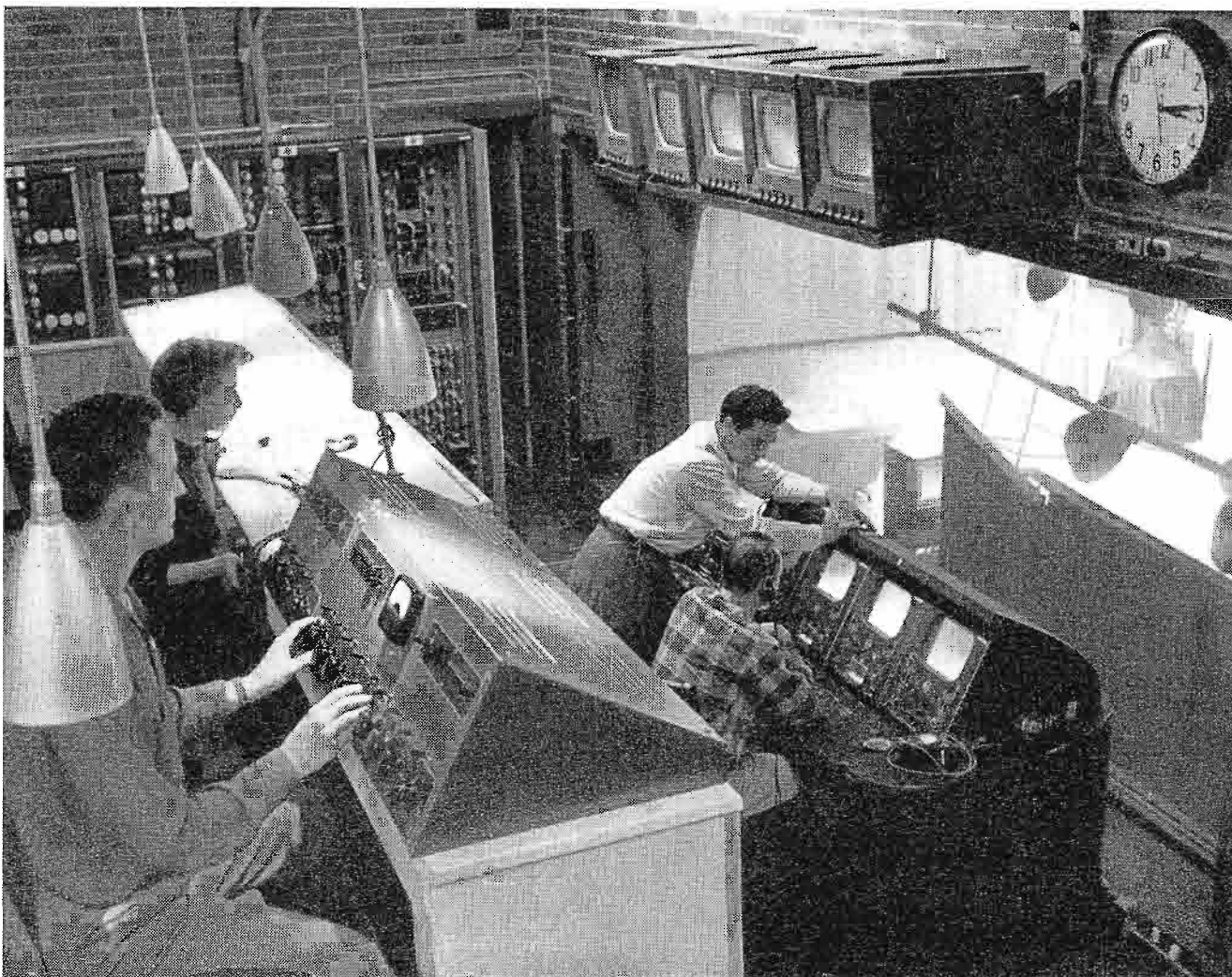


FIG. 5. Television control room overlooks the studio area. Camera, audio and switching controls are located here. Platform at the rear of the control room gives program director and audio operator full view of the studio.

FIG. 6. Cinematography studio where students are schooled in basic movie techniques. One of the projects of the cinematography staff is the production of film sequences for University produced TV programs.

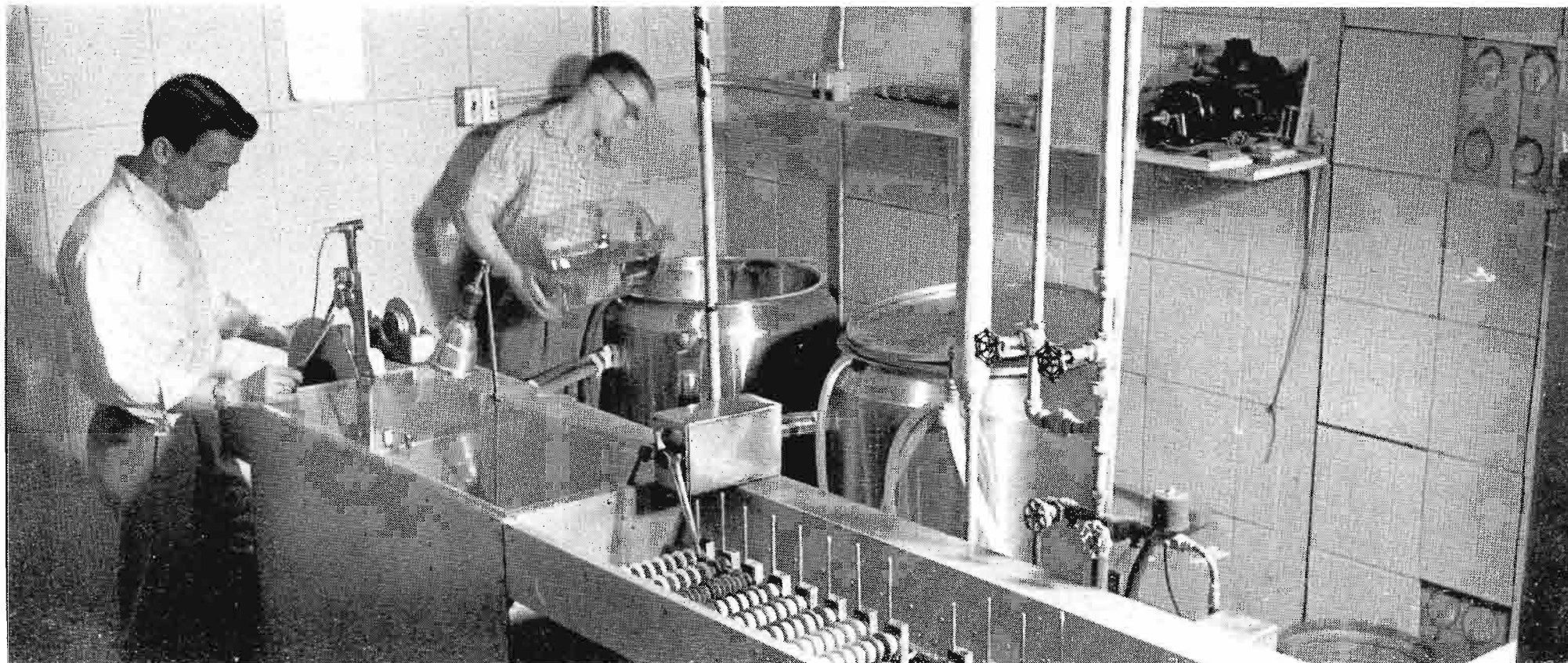


FIG. 7. Film processing lab. Both kinescope material and film sequences are processed here.

TV Education Courses

Television majors at Iowa enroll in the Division of Television-Radio-Film of the Department of Speech and Dramatic Art. They devote most of their first two years to Liberal Arts courses such as history, literature, political science, and natural science. Thus prepared, their final two years are concentrated to a greater extent upon television planning, production, and performance. Not only do students receive training in their specific television courses, they also receive a solid background in the closely allied areas of speech and theater, including directing, lighting, design and costuming. In addition, they learn to operate all studio and control equipment.

Writing and Acting

Television writing is emphasized in a practical manner. Students write the programs, and in many cases see them actually produced for television. Scripts that are assigned are used in particular programs which the University is producing. The student follows his script through its various stages of production until the finished program is ready for kinescoping.

Acting training is offered by the Department of Speech and Dramatic Art and is one of the finest theater plants in the country. The student who is particularly interested in acting for television has an

opportunity to appear in both classroom and University television productions as well as stage productions.

Cinematography

Students in cinematography are introduced to all phases of motion-picture making. They learn to operate various motion-picture cameras including sound-on-film types. Students prepare shooting scripts for class movie projects, and are instructed in directing, film editing, and lighting techniques. Practical experience is gained in preparing film sequences for University produced television programs.

Set Design and Lighting

Technical courses in dramatic art are planned to prepare students interested in this work for either the legitimate theater or television or both. Instruction can be received in set design and construction, costuming and lighting. Students with a special interest in television apply and practice their technical knowledge in the Television Center.

University Productions

The students real laboratory is working on the production of weekly programs for release to commercial stations. Student writers work on many of the program scripts and student production crews operate cameras and equipment.

Since 1952, the State University of Iowa Television Center has worked in co-operation with other Iowa educational institutions in producing one of the nation's first sustaining daily educational TV series. Called "TV Schoolltime" the series has been viewed by thousands of students from the elementary grades through high school. Series is still going on. Other production projects have included a series of programs for the Iowa State Medical Association and "The Scientist on the Corner" series for the Iowa State Pharmaceutical Association. Current production activities include a weekly series of geography programs directed to students in the elementary grades, and a series on "The Secret of Flight" for the Educational TV and Radio Center.

Graduate Work

Specialization in the fields of television writing, direction, lighting, design, cinematography and communications research is available at the graduate level. Work toward M.A. or Ph.D degrees may be completed in all of these fields.

Graduate programs are built to individual student requirements. Courses are selected from television, speech, theater and allied fields to meet the specific needs of each student.

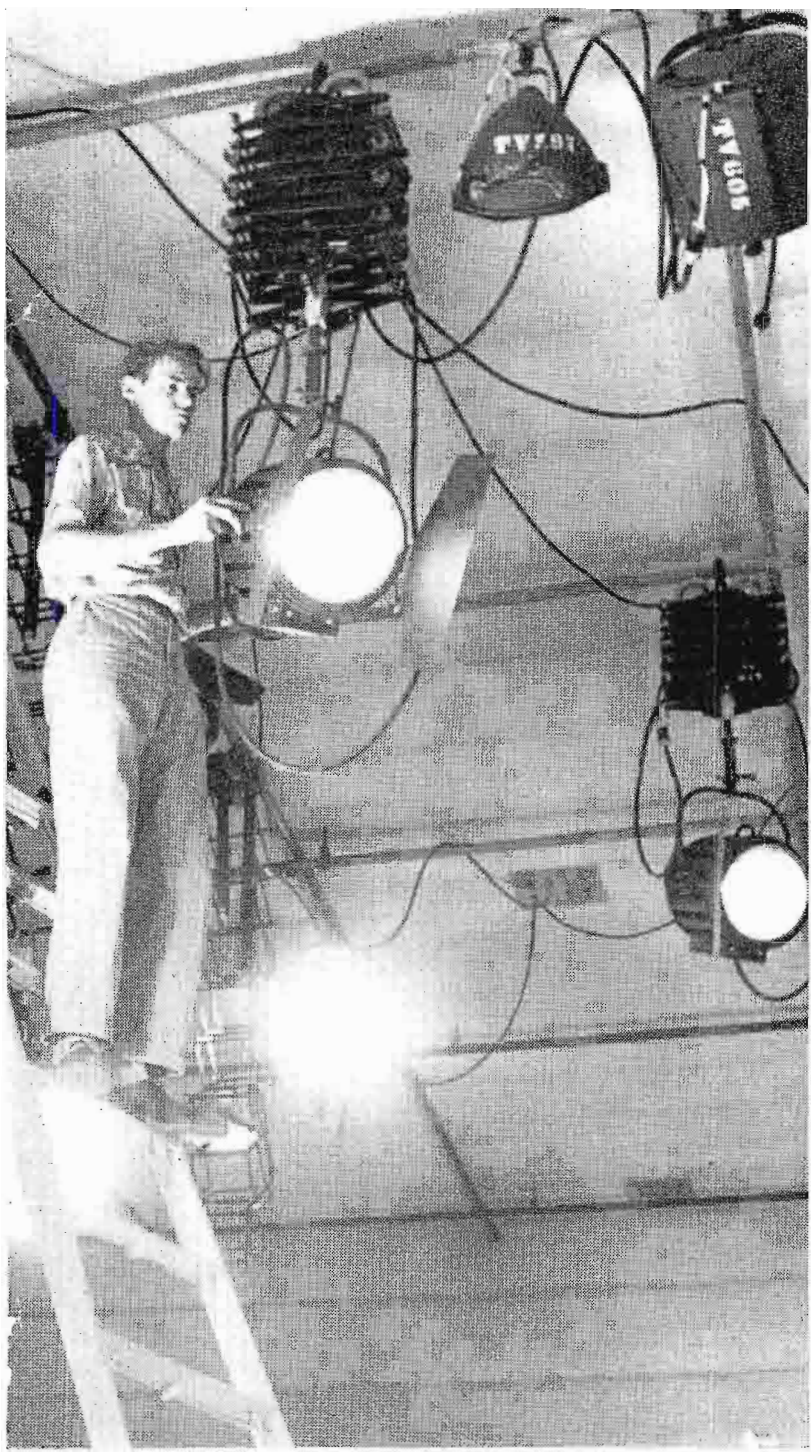


FIG. 8. Students in lighting classes with a special interest in TV have an opportunity to practice their technical knowledge in the TV studio.

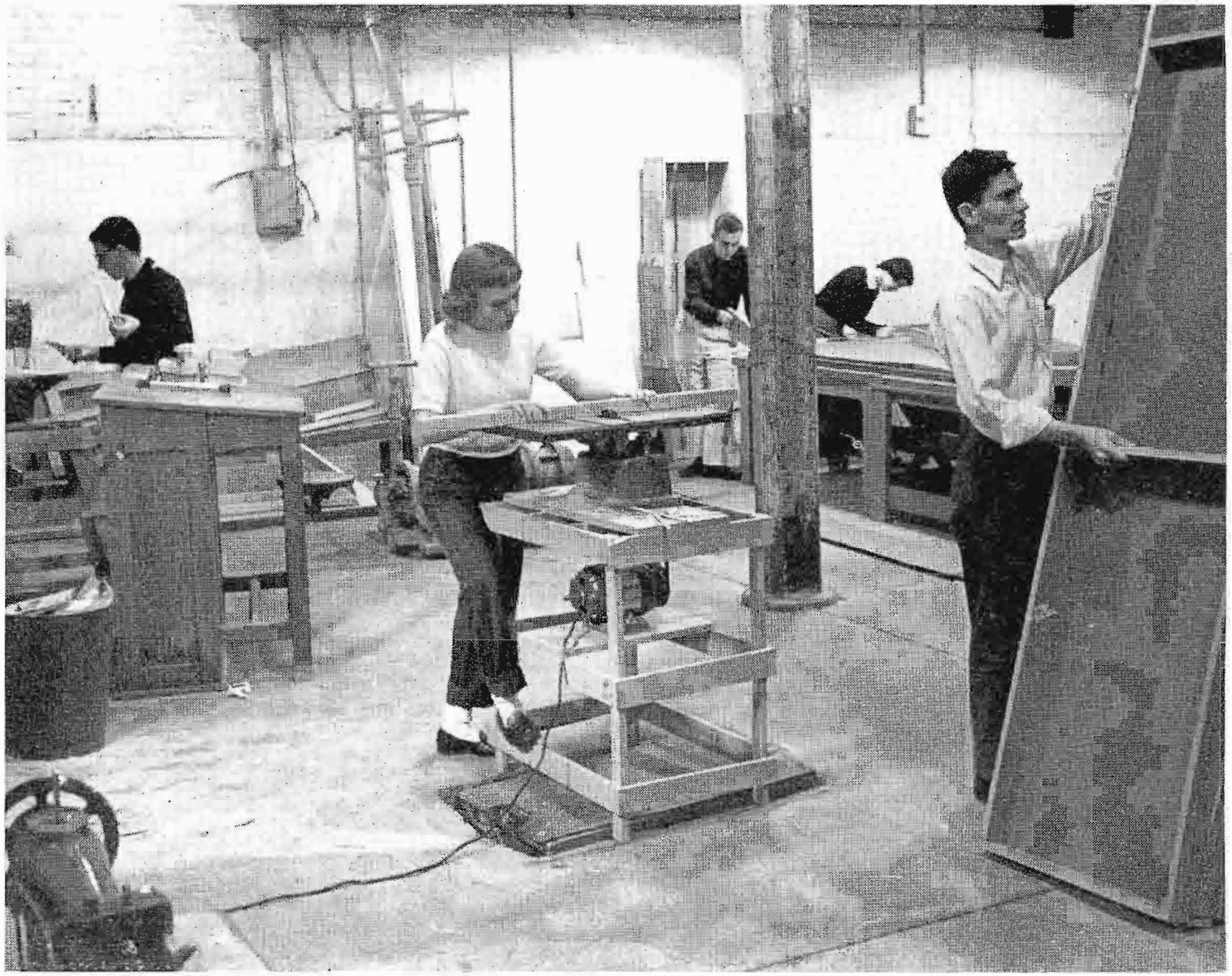


FIG. 9. Workshop in which students in set design build their own sets for TV production.



FIG. 10. Current geography series, kinescoped and distributed to commercial stations, is directed to students in the elementary grades.



FIG. 11. Students handle assignments in both University productions and courses taught on closed circuit TV.