

# Postal S.W. Booster

**GUARANTEED TO IMPROVE SHORT WAVE  
RECEPTION 100%**



Something the short wave Fan has been waiting for, for a long, long time, The Postal Short Wave BOOSTER will increase the sensitivity and selectivity of your present receiver over 300%. It eliminates repeat spots. (image frequencies) and lowers the background noise considerably.

IF you are interested in hearing foreign stations you could never hear before. - IF you have difficulty in separating stations on the 49, 31, 19, 16 meter and all amateur bands - IF your background noise is too high - IF you are troubled with stations repeating on different points of the dial - Do not hesitate - Purchase a Postal Pre-Selector and BOOSTER.

## CONSTRUCTION

Each Postal BOOSTER is actually laboratory constructed, tested, and calibrated. It employs 2-78 pentodes, 1-37, uses the new drawer coils and is entirely self powered. It is equipped with a gain control, switch to cut the BOOSTER in and out of the circuit, and an illuminated aeroplane dial for the main tuning. It is mounted in a beautiful sturdy crystal finished shielded cabinet with rubber legs.

## SIMPLE TO CONNECT AND OPERATE

The Postal BOOSTER can be connected to your set in less than a minute. No tools or soldering necessary. The POSTAL BOOSTER WILL IMPROVE RECEPTION ON ANY SHORT OR ALL WAVE RECEIVER regardless of the make or price you have paid. Sold with a money back guarantee. Operates with either AC, DC or battery. Simple instructions furnished with each unit. Prompt deliveries. Capt. Horace L. HALL, the famous Short wave Authority and Columnist now uses a Postal BOOSTER.

## SPECIAL PRICES

SOLD COMPLETELY LABORATORY CONSTRUCTED AND  
CALIBRATED WITH ONE DRAWER FOR ANY BAND ..... \$20.95

DRAWER COILS AVAILABLE FOR (14 to 31) (29 to 61)  
(59 to 90) (90 to 200) (200 to 350) (350 to 550)  
Meter bands, Each Drawer ..... \$3.95

MATCHED SET OF 2-78, 1-37 Sylvania Tubes ..... \$2.95

NOTE: Special discount of 5% to all I.D.A. Members.

Send For Free Booklet:

"8 Methods of Improving Short-wave Reception"



POSTAL

CORP.

RADIO

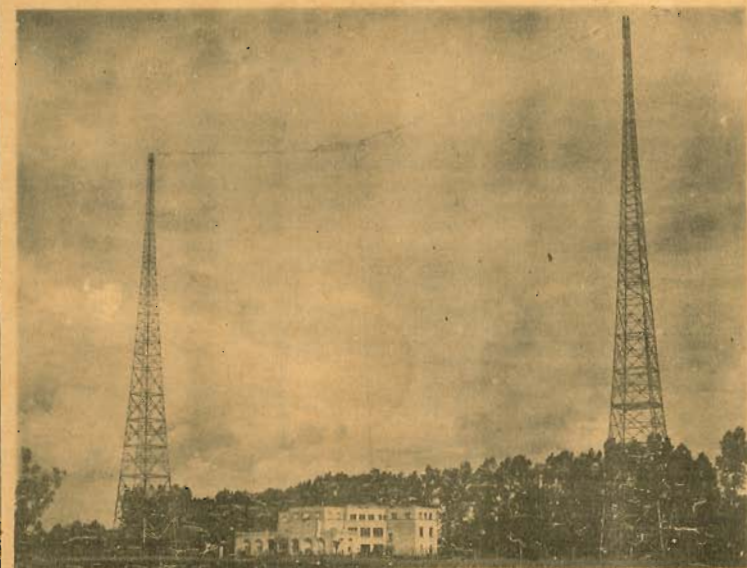
RADIO EQUIPMENT AND SUPPLIES

135 D LIBERTY ST.

NEW YORK, N. Y.

OCTOBER 1934

# The GLOBE CIRCLER



RADIO STRASBOURG, P.T.T.

Strasbourg, France

Second Annual

I.D.A. Sponsored International Good-will Broadcast

Sunday--December 9th.

2:00-3:00 am EST. (859kc) 8:00-9:00 am GMT.

## FEATURES

Captain Hall's Page

New Short Wave Station List

I. D. A. Foreign Broadcast Calendar

World Wide Contest Winners

International DXers Alliance





## WORLD WIDE RECEPTION

SHORT WAVES : FOREIGN STATIONS : AIRPLANES : AMATEURS  
TELEPHONES : SHIPS AT SEA : AIRPORTS : POLICE CALLS



### PATTERSON SCORES AGAIN

## THE PATTERSON PR-12

An ALL-WAVE RECEIVER-- with Crystal Filter that may be used for DX'ing and turned off for tone --- This Crystal eliminates all side bands and makes BC tuning within 5 KC easy --- Auditorium type Speaker --- Twelve Tubes --New Type band Spread can be logged --- NO PLUG-IN COILS --Single Dial showing only the Band in use --Tuned Pre-Selector Stages ---"R" Meter ---Beat Oscillator ---Ultra Selective I.F. Stages ---Single Unit Chassis, Three unit construction--Back Ground Noise Suppressor --Improved AVC-Class "A" Prime Audio Push-Pull with driver stage --10 to 550 Meters --Price \$139.50 F.O.B. Beverly Hills, U.S.A.

#### SPECIAL

We will allow a discount of 40 and 2 % on the FIRST TWELVE ORDERS with remittance from I.D.A. Members. Place your order direct to the address below and to get the special discount be sure and give your I.D.A. Membership number. Deliveries start on October 15, and will be filled in order of placing. THE PR-12 HAS BEEN DESIGNED FOR FOREIGN RECEPTION.

--We Guarantee To Out Demonstrate Any Receiver On The Market Regardless of Price.--

The DX Radio Sales Co.---Distributors  
Cable Address "DEEX" WYoming 0429 P. O. BOX 291  
BEVERLY HILLS, CALIFORNIA, U.S.A.

Member of I.D.A.

October 1934

"The Globe Circler"

3

#### EDITORIAL

Early reports indicate this will be one of the greatest DX seasons yet. TP's are coming through with exceptional strength.

John Delmyer, Lansing, Mich. writes "Monday am (Sept 17) is the only time I can honestly say I heard Aussies on the Broadcast Band coming in with volume up to R9 on the speaker. Class A stations were better than our locals. The weaker stations such as 3YA came in with full loud speaker volume. 2BL could have been heard a block away at 6:00 am. 4QG was louder than WJR"

Ralph Schofield, Missoula, Montana writes "Radio is getting better; as this am (Sept 15) KZRM was Q5/ R7, JOHK Q5/R9, XGOA Q5/R7. My log for the same morning included JOAK1, JOAK2, JOBG, JOBK1, JOBK2, JOCK1, JOCK2, JOFK, JOIK, JODK1, JODK2, 2YA, 3YA, 4RK, 2CO, 2BL."

#### VICE-PRESIDENTS APPOINTED

Captain Horace L. Hall, 1642 York Avenue, New York City has been appointed as I. D. A. Vice-President in charge of Short Wave activities

Frank Crowder, 12 Belle Vue Place Belle Vue Rd., Leeds 3, England has been appointed as I.D.A. Vice-President in charge of activities in Gt. Britain, and Europe succeeding Francis Wiseman who was forced to give up the position on account of business pressure.

New State Mgrs. to be appointed are Mr. Irving Van Zandt Jr., Bozeman Montana, and Mr. J.H. Woodhead, Thermopolis, Wyoming for their respective states.

New Provincial Mgrs. to be appointed are Mr. A.L. Hynes, Clarendville, Newfoundland, and Mr. Philip Robinson, Shelburne, Nova Scotia for their respective Provinces.

#### CAPT. LEONARD PLUGGE VISITS U.S.A.

Capt. Plugge, famous President of the International Broadcasting Co. of London arrived in New York City on the S.S. Majestic, Sept 4th. I.D.A. and S.W.P. Representatives Messrs. L. Cockaday, S. Gorgon Taylor, Captain Hall, Bragdon were on hand to greet the Capt. He registered at the Waldorf-Astoria where he will be glad to meet any IDA, SWP, or IBC members. He also plans to visit the "Century of Progress Exposition" in Chicago, where it is hoped your Ed. will have a chance to contact him.

#### NEW YORK SHORT-WAVE CLUB GOES IDA.

At the regular meeting of the N.Y.S.W. Club on Sept. 13th it was decided with a unanimous vote to affiliate with the I.D.A., and to adopt the GLOBE CIRCLER as their Official Organ. BETA CHAPTER of the I. D. A. will also merge with this organization which it is proposed to call the Short Wave Club of New York affiliated with the International Dx'ers Alliance. The Short Wave Club of New York numbers some 75 members, and includes many seasoned, and experienced SW Pioneers, and Dx'ers who will be a very valuable addition to the rank of the I. D. A. To this new and largest branch of the I. D. A. we all EXTEND THE HAND OF FELLOWSHIP, and WELCOME THEM INTO THE I. D. A. with the very heartiest of Greetings. Further information on the activities of this Society will be included each month. --Ed

#### SECOND ANNUAL I. D. A. CONTEST.

The 2nd Annual World-Wide Contest for Broadcast Band Reception will officially start on October 1st, 1934, at 12:01 am your local time. All verifications mailed to Contest Judges bearing a post mark not later than August 31st, 1935, will be allowed in the contest.

Only verifications of regular B. C. stations operating between 540 and 1570kc will be allowed.

Winners will be judged on a basis of points, each veri' receiving a definite rating according to a system being worked out by Mr. R. Hunt. Exceptional Dx'ing locations will be subject to a handicap. By working on this basis it is believed Geographical inequalities will practically be eliminated.

It is proposed to have at least seven Contest Judges, each responsible for a certain Area. Starting about January 1st, monthly standings will be published.

Complete rules for the Contest will be worked out by the Rules Committee and will be announced either in the November G.C., or by special bulletin.

Attractive and worthwhile awards will be announced at a later date.

#### NOTICE

ALL MATERIAL FOR THE GLOBE CIRCLER, INCLUDING ADVERTISING COPY ABSOLUTELY MUST REACH US BY THE 17TH OF EACH MONTH. --ED.

Join the  
WORLD  
on the  
PATTERSON ALL WAVE RADIO



Published Monthly Excepting July

Price, \$1 a year by  
subscription in the United States.

VOLUME II.

BLOOMINGTON, ILLINOIS, U. S. A.

NO. 9

## TRY FOR THESE

Dark- 5:30 pm EST: Poste Parisien, Paris, France	959kc	100kW
Dark- 5:30 pm EST: Trieste, Italy.	1222kc	10 kW
Dark- 5:30 pm EST: Turin, Italy.	1140kc	7 kW
Dark- 6:00 pm EST: Lisbon, Portugal.	629kc	15 kW
Dark- 7:00 pm EST: Hamburg, Germany.	904kc	100kW
Dark- 7:00 pm EST: Breslau, Germany. (Best Sat. Evening)	950kc	17 kW
Dark- 7:00 pm EST: Radio Normandie, Fecamp, France.	1456kc	10 kW
Dark- 6:30 pm EST: Radio Toulouse, Toulouse, France.	913kc	60 kW
Dark- 8:00 pm EST: Stuttgart, Germany (Best Sat. Evening)	574kc	100kW
Dark- 8:00 pm EST: Frankfurt, Germany (Best Sat. Evening)	1195kc	17 kW
Dark- 8:00 pm EST: Buenos Aires, Argentina (LS2)	1190kc	40 kW
Dark- 8:00 pm EST: Buenos Aires, Argentina (LR8)	1150kc	20 kW
Late Sat. Nights : Buenos Aires, Argentina (LR3)	950kc	12 kW
Late Sat. Nights : Buenos Aires, Argentina (LR2)	910kc	8½ kW
Till 1:00 am EST: Santiago, Chile. (CE106) (Sunday am)	1060kc	500wt
Till 1:00 am EST: Santiago, Chile. (CE98) (Sunday am)	980kc	1 kW
1:00- 3:00 am EST: Guatemala City, Guatemala (TGX) (Sat am)	1400kc	150wt
4:00- 5:00 am EST: Guatemala City, Guatemala (TGW) (Sun am)	565kc	10 kW
3:00- 4:00 am PST: Shanghai, China (XMHA) English annor.	600kc	600wt
3:00- 4:00 am PST: Nanking, China (XGOA)	660kc	75 kW
3:00- 4:00 am PST: Hangehow, Chekiang, China (XGOD)	977.5kc	1 kW

## I. D. A. STAMP EXCHANGE

Mr. Ralph Schofield, 300 Evans Ave., Missoula, Mont., notifies us that he now has a small supply of stamps from U.S.A., Argentina, Austria, Belgium, Canada, Chile, Colombia, Costa Rica, Danzig, Denmark, Dominican Rep., El Salvador, England, Germany, Guatemala, Holland, IFS, Poland, Rumania, Sweden, and Tunisia, with more coming in daily. As this supply will not last long we would suggest you place your orders now. Mr. Schofield has stamp Exchange Reps. in Canada, France, Sweden, Cuba, Argentina, Chile, IFS, Denmark, and Australia.

## I. D. A. STATIONERY

The new supply of I.D.A. Letterheads which were announced last issue are going fast, and we would suggest you place your order before they are gone. Prices are 50 sheets 45¢, 100 sheets 70¢, 200 sheets \$1.25 Postpaid in America. Slightly higher in foreign countries.

## KDKA DX CLUB

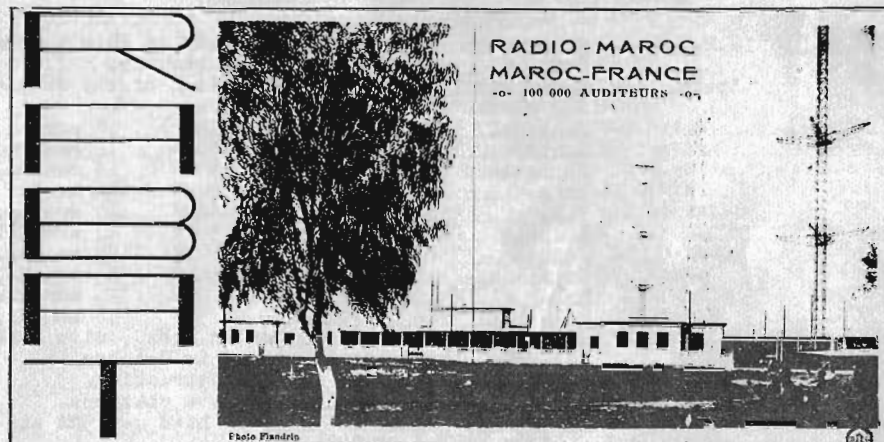
Weekly-- Fri. 11:30-12:00 pm CST  
KDKA-980kc, W8XK-48.86meters, W8XK - 25.27 meters.

## THE VOICE OF THE VIRGIN ISLANDS

Radio WTDW located at Christiansted, St. Croix, Virgin Is., operates on 69.85m/4295kc and is used principally for broadcasting Hurricane warnings according to Mr. H.N. McKenzie Asst. Supt. of Public Works at St. Croix. Mr. McKenzie put on a special test for the IDA over WTDW on Sunday, Sept 16th, 4-5pm EST. We are sorry we were not able to give the BC much publicity on account of such short notice. We would be very pleased to have another test from WTDW later in the evening, and with a notice much further in advance.

## JAMAICA SPEAKS

A very interesting letter from, Mr. Frank Lyons, Lyon's Mark Lane Wharf, Kingston, Jamaica informs us that although there is no regular BC station there he has personally pushed this activity, and has upon several occasions arranged for unique broadcasts from Jamaica. One being THE SETH PARKER BROADCAST. On three separate occasions the S. S. Colombia has arranged broadcasts from Jamaica harbor at Mr. Lyons instigation. Another of these is expected abt. Oct. 29th. 1250kc will probably be utilized.



CNR at Rabat, Morocco, N. Africa takes on a special significance as a special broadcast is now being arranged for the I. D. A.

CNR transmits on 23.39m/12825kc, and on 37.33m/8035kc. The Broadcast frequency is 601kc.

The Shortwave Xmtr uses the call Maroc-France. The BC Xmtr call is Radio-Maroc.

The Schedule of Maroc-France on 23.39m is 4-7 am CST when working telephone with St. Assise, France, and 6:30 to 8:00am on Sundays only when rebroadcasting the BC station. The Schedule on 37.33m is 1:30-4pm CST on Sundays only when rebroadcasting the BC station.

The main antenna of Maroc-France is made up of two screens supported by three towers 68 meters high. One screen is used for 23.39m and the other for 37.33m.

Two secondary antennas in the form of a square and placed in the shrouds of the towers, permit the station to radiate in every direction on the above waves in view of the eventual establishment of communication with Algeria, Tunis, and French West Africa. The secondary antenna of 32.26 meters makes it possible moreover to maintain connection with Paris at night when the wave of 23.38m becomes ineffective.

The antenna power is 15 Kilowatt for telegraph, and 10 Kilowatts for telephone.

The radio-electric center of Rabat contains (1) A receiver for SW with a double change of frequency

and provided with the latest improvements against fading. This receiver is installed at the center of the place for listening, Avenue Bearnay, at Aguedal. (2) A junction station for the network made up of an ensemble containing a differential transformer, amplifiers, equalizers of lines etc. the action of which permits any subscriber of the general telephone network of Morocco to communicate with any subscriber of the French telephonic network. This junction station is installed in a room adjoining the room of the automatic central telephonic radio of Rabat.

Secret telephonic communication is exchanged regularly between France, and Maroc at certain hours of the day.

The station Maroc-France is provided with a multiplex arrangement that permits the simultaneous broadcasting of telegraphic signals and secret telephonic conversation by means of one antenna.

When sending reports to Rabat, they should be addressed to Radio-Maroc, OR Maroc-France, de l'Office cherifien des P.T.T., Rabat, Morocco, North Africa.

## STOP PRESS--

As we go to press we receive a letter from Mr. Alec Kinghorn of Havana Cuba, informing us of these SPECIALS.

CMCY 1375kc, Oct 1st, 1 to 2am EST. for I.D.A.

CMQ 840kc, Oct 3rd, 1 to 2am EST.

for CDXR (It is unfortunate the letter on these came too late)

## AROUND THE WORLD WITH THE BROADCASTERS.

## NEW STATIONS

EUROPE	U.R.S.S.	Twenty new stations will be put to work in the USSR of from 1 to 35kW/s very shortly.
	Spain.	A new National Net work comprised of the following stations will be constructed:
	Nacional, Madrid	185kC 150kW 18 months.
	Centro, Madrid	1022kC 50kW 12 months.
	Nordeste, Barcelona	1095kC 50kW 12 months.
	Este, Valencia	850kC 20kW 36 months.
	Sur, Seville	731kC 60kW 24 months.
	Nordeste, Coruna	795kC 30kW 24 months.
	Norte, Vizcaya	1258kC 30kW 24 months.
	Canarias, Tenerife	1447kC 10kW 24 months.
	Relay #1, Murcia	1447kC 5kW 36 months.
	Relay #2, Oviedo	1447kC 5kW 36 months.
ASIA MINOR	Palestine.	Jerusalem to get BC station on 668kC, with 20kW
ASIA	India.	Peshawar Station to be opened in October.
		Delhi station of 3kW under construction.
		Hyderabad, Madras, Patiala to have stations.
	Japan	Kagoshima, Toyama and Koku to have new 5kW stations by end of 1934.
SO.AMERICA	Chile	Valdivia, 1380kC, 100watts. CE103
	Venezuela	Caracas, 1100kC. YV4BSG
AUSTRALASIA	New Zealand	Dunedin, 1140kC, 125watts. 4YO
	Fiji Is.	Suva. Broadcasting and S.W. Station proposed.
NO.AMERICA	Canada.	Quebec, 1050kC, 1kW. Now in operation. CRCK
		Ont. Sault Ste. Marie, 890kC, 100w by Nov. CJIC
		N.B. Moncton, 1370kC, 100w by November CKCW
	Mexico	Oto. Guanajuato, 1420kC, 60w now operating XEAX
	U.S.A.	Virginia, Staunton, 500w, 550kC.
		Indiana, Lafayette, Portable 890kC, 50w. W9XDT

## CHANGES

EUROPE	France	Paris LL, 2000w, from 828 to 1443kC.
	Portugal	Paredo, 1031kC, 5kW. In operation again CT10L
	Spain	Seville, 731kC, 1 1/2 to 2kW. RAJ5
		Barcelona, R.A., 1022kC, claims 3kW RAJ15
		Oviedo, 1022kC, claims 3kW RAJ19
ASIA	Japan	Tokyo, 870kC, 10 to 150kW within next two yrs.
		Osaka, 750kC, 10 to 100kW in next two yrs. JOBK
SO.AMERICA	Argentina.	Bahia Blanca, 1280kC, 200w to 5000w. LU7
	Chile	Santiago, 1065kC, 200 to 500 watts. CE106
AFRICA	Canary Is.	Las Palmas, 1500kC, 100 to 250 watts. RAJ50
NO.AMERICA	Cuba	Havana, from 640 to 840 and to have 5kW CMQ
		S. de Cuba, burned down. To have new Xmt. CMKC
	U.S.A.	Minn. Minneapolis, 1250kC, 1kW change WRHM to WTCN
		Kans. Topeka, 580kC, 1 to 2kW day. WIBW
AUSTRALASIA	N.Z.	Auckland, 880kC, 100 to 150w. 1ZR to 1YX
		Greyouth, 940kC, 300 to 400w. 3ZR
		Palmerston, N., 960kC, 150 to 250w. 2ZF
		Dunedin, 1050kC 50 to 70w. 4ZB
		Dunedin, 1050kC. 50 to 100w. 4ZM
		Auckland, 1090kC. 50 to 200w. 1ZB
		Gisborne, 1150kC. 110 to 17w. 2ZM
		Masterton, 1170kC. 8 to 7w. 2ND
		Manurewa, 1260kC. 17 to 50w. 1ZM
		Cromwell, 1280kC. 25 to 7w. 4ZC
		Greyouth, 1300kC. 50 to 35w. 3ZE
		Nelson, 1110kC to 1360kC. 50w. 2ZR
		Palmerston, N. 1400kC. 50 to 100w. 2ZO
		Christchurch, 1450kC. 50 to 100w. 3ZM
		Auckland, 650kC. 1kW to 10kW by end of yr. 1YA
		Dunedin, 790kC. 500 to 2500w shortly. 4YA

(Continued on Page 7)

## CHANGES (Cont'd)

AUSTRALASIA	Australia	Melbourne, 610kC, 5kW to 4 1/2kW 3LO
		Sydney, 665, 5kW to 4kW 2FC
		Melbourne, 800kC, 5kW to 3 1/2kW 3LO
		Sydney, 855 kC, 3.4kW to 4kW 2BL
		Sydney, 3kW, from 950 to 949kC 2GB
		Adelaide, 960kC, 1000 to 300 watts. 5DN
		Hamilton, 1010kC, 200 to 300 watts. 3HA
		Fort Pirie, 1040kC, 50 to 2000 watts. 5PI
		Canberra, 1050kC, 50 to 500 watts. 2CA
		Melbourne, 1145kC to 1060kC, 25 watts 3YB
		Sydney, 1070kC, 1 1/2 to 1 kW 2KY
		Newcastle, 1110kC, 200 to 500 watts. 2HD
		Brisbane, 1145kC, 600 to 850 watts 4BC
		Townsville, 1170kC, 100 to 200 watts. 4TO
		Melbourne, 1180kC, 500 to 400 watts. 3DB
		Sale, 1280kC, 50 to 250 watts 3TR
		Rockhampton, 1330kC, 250 to 50 watts. 4RO
		Melbourne, 1350kC, 200 to 500 watts. 3KZ
		Goulburn, 1390kC, 50 to 75 watts. 2GN
		Newcastle, 1418kC, 200 to 500 watts. 2KO
		Melbourne, 1425kC, 300 to 800 watts. 3AW
		Ulverston, 1460kC, 200 to 300 watts. 7UV
		Perth, 1470kC, 80 to 300 watts. 6IX
		Albury, 50 watts, 1500 to 1480kC 2AY
		Melbourne, 50 watts, 1470 to 1500 kC 3AK

## BROADCASTS OF THE INTERNATIONAL DX'ERS ALLIANCE.

KTRB,	"McTammany & Bates", Modesto, California.	740kC 250w
OCT. 2nd	Tuesday 6:20-6:40 am EST (Arranged by Wm. Ellis)	
WJBC,	"A.M. McGregor, Bloomington, Illinois.	1200kC 100w
OCT. 6th	Saturday 3:00-3:20 am EST (Arranged by Robt. Eikenberry)	
CFQC,	Saskatoon, Sask. Canada (IDA-CDXR)	840kC 1000w
OCT. 13th	Saturday 3:00-4:00 am EST (Arranged by Chas Hesterman)	
HIX	"J.R. Saladin", Santo Domingo City, D.R.	1270kC 1500w
NOV. 11th	Sunday, 3:00-4:00 am EST (Arranged by R.H. Tomlinson)	
4BC	"J.B. Chandler & Co.", Brisbane, Qld, Australia.	1145kC 850w
NOV. 11th	Sunday, 5:30-6:30 am EST (Arranged by Wm. Ansell)	
COK	"Marques Gonzalez # 52, Havana, Cuba.	1230kC 250w
NOV. 17th,	Saturday 2:00-3:00 am EST (Arranged by Alec Kinghorn)	
XEB	"El Buen Tono", Mexico City, D.F.	1030kC 10000w
NOV. 24th,	Saturday starts 10 pm EST (Arr. by Guerrero-Walmsley)	
STRASBOURG,	France "Radif. Assoc. Radio Strasbourg PTT"	859kC 17000w
DEC. 9th,	Sunday 2:00-3:00 am EST (Arranged by Rudolph Kure)	
LR5	"Radio Excelsior", Buenos Aires, Argentina.	830kC 2500w
DEC. 9th,	or 10th 2:00-3:00 am EST (Arr. by Roberts-Morrison)	
	Award for most comprehensive report a silver mounted Mate cup. All correct reports verified with handsome diploma veri'	
CP4	"Radio Illimani", Bolivian Radio Co, La Paz, Bolivia	1040kC 10000w
DEC 11th,	Tuesday 3:00-4:00 am EST (Arranged by R.H. Tomlinson)	
CPZ	"Radio Nacional", Casilla Correo # 596, La Paz, Bolivia.	
DEC 12th,	Wednesday 2:30-3:30 am EST 1220kC 5000w	
	A very unusual programme of native Inca music, which will be a rare treat seldom enjoyed in this country. (Arr. R. Tomlinson)	
IOWA ON THE AIR,	With All Iowa Stations on Air.	
DEC 16th	Sunday, 1:00-6:30 am EST	
HJN	"Sr. Luis Ramirez Arana", Jefe del Servicio de Inalambricos. Ministerio de Correos y Telegrafos, Bogota Colombia	682kC 1000w
DEC 21st,	Friday, 1:00-3:00 am EST (Arranged by Robert Weber)	
RAJ7	"Union Radio-Sociedad Anonima, Madrid, Spain.	095kC 10000w
JAN 10th,	12:01- 1:30am CST (6-7:30am GMT) (Arr. by Earl Roberts)	
CT10L	"Radio Club de Portugal", Paredo, Portugal.	1031kC 5000w
JAN 16th,	12:01- 2:00am EST (5-7am GMT) (Arranged by R.H. Tomlinson)	
KGYO	Missoula, Montana. (IDA-CDXR-NRG)	1200kC 100w
JAN 18th,	11pm EST to JAN 19, 5pm EST. (Arranged by Ralph Schofield)	

## DISTRICT HONOR ROLLS

Remember members to report your new veries promptly to the Director OF YOUR district so he may make up your District H.R. Will the directors of Districts No.1, and No.8 please send in corrected Honor Rolls. The director of Dist. 4 is on a vacation at present. We hope to have an Honor Roll from New Zealand by next G.C. Will Mr. Stanton please see that we get this H. R., or appoint some one to take charge of it. The corrected H. R.'s must be in by the 17th of each month.

## I.D.A. HONOR ROLL FOR GT. BRITAIN AND EUROPE:

John S. Bohm	16X	Sweden	KOA, WCFL, TPU, CKCK, KWG, KFXM, WJDX, WEBC, WJBW
F.R. Crowder	8X	Eng.	WTJS, KGIR, KFLV, WBCM, KXL, WMAS, Algiers.
R. Mumford	6X	IFS.	KGW, WDAF, WMBG, WSJS, KSO, KVOR, KLZ, WREN.
K. Judd	6X	Eng.	KRLD, KTHS, CKGW, WAAM, WFEA, WICC.
F. Wiseman	6X	Eng.	NAA, KMPC, 2UE, 5CL, KGU, KERN.
R. Ellis	6X	Eng.	CKOC, LR6, LR9, WCAM, WDSU, (WPDP).
N. Robinson	3X	Eng.	WGAR, WKRC, WFBM, WSPD, WSMKJR.
R. T. Coales	1X	Eng.	CKLW, R.L. Rawles 1X Eng. KSTP.
R. Pybus	1X	Eng.	WJJD, P. Tremaine. 1X Eng. WMAL.
J. O'Donnell	1X	IFS.	KHQ, A. Adams. 1X Eng. CAIRO

F.A. Farr. loses WLTH to Coales. \*  
R. Hamilton loses WORC to Coales. \*  
L. Coursey loses WRNY to Coales. \*  
These members lose their places on the Honor Roll.

Slight changes in the Dist. H. R.'s of Dists-5, -2, -6 are as follows  
Dist-5: Mr. James Polk on Honor Roll for veri' from Fecamp.

Dist-6: Mr. Howard Eck reduced from 7 to 5 veri's by losing JOQK and JOUK to Mr. DeMyer. Mr. DeMyer places on the H.R. with JQAK.

Dist-2: Mr. Stuart Walmsley loses his place on the H. R. by losing LR4 to Mr. Mathis, and 4TO to Mr. Hunt.

Mr. Mathis gains a place on the H.R. with a veri' from CPL.

## SPECIAL DEGREES

Those becoming eligible for special degrees this month are:

## TA DEGREE

Alphonse F. Wager, Provincetown, Mass  
Ernest M. Nevin, Dunedin, New Zealand

## TP DEGREE

Ernest M. Nevin, Dunedin, New Zealand  
We will be pleased to issue the above upon receipt of the 50¢ fee.

## BEST VERI'S RECENTLY

NOTE: When sending in your reception report be sure and include a list of all veri's received during the month for our records, and for credit in this column. -Ed.

Capt. Hall, New York, N.Y.	JOQK
Joaquin T. Russe, Provincetown	LR9
John DeMyer, Lansing, Mich.	JOUK
R. Hunt, Leucadia, Calif.	4TO
H.G. Mathis, Holbrook, Ariz.	CPL

## WORLD WIDE CONTEST WINNERS

Grand Award- Lincoln A.W. Receiver.

(1) D.L. Davis Jr., Pearl Harbor, Ha.

Total number of veri's entered 114

One Yr. Subscription to World Radio

(2) F.W. Barnett, Dunedin, N.Z. (84)

Two Year Subscription to RADEX

(3) H.H. Jones, Honolulu, Hawaii (74)

One Year Subscription to RADEX

(4) R.T. Coales, Southsea, Eng. (71)

One Year Subscription to RADIO:

(5) John S. Bohm, Malung, Sweden (70)

(6) F. Wiseman, London, England (69)

(7) E.B. Roberts, Danvers, Mass. (61)

(8) F.R. Crowder, Leeds, England (54)

(9) A.C. Lyell, Johannesburg, South Africa. (53)

(10) Don Townsend, Fallon, Nev. (51)

(11) W.H. Ansell, Regina, Canada (50)

(12) Robt. Ellis, Bellshill, Scot. (48)

(13) N. Robinson, Skinningrove, England (45)

(14) James Watson, Regina, Canada (43)

(15) Robt. Mumford, Dublin, I.F.S. (39)

(16) Howard Eck, E. Lansing, Mich. (38)

(17) Chas. Hesterman, Saskatoon, Sask., Canada (37)

(18) Frank Farr, Trowbridge, Eng. (36)

(19) Philip Robinson, Shelburne, Nova Scotia, Canada (28)

(20) Ralph Schofield, Missoula, Montana. (22)

## DIVISIONAL WINNERS

United States and Canada. (Does not include Territory of Hawaii.)

(1) Evan B. Roberts, Danvers, Mass.

One Year subscription to RADEX.

(2) Don Townsend, Fallon, Nevada

Reeks World Time Converter.

## SPECIAL HONORARY AWARD.

A.C. Lyell, Johannesburg, So. Africa.

Reeks World Time Converter.

(Other Divisional Awards next G.C.

## WITH OUR MEMBERS



To our left we have our esteemed Vice-President Mr. F. R. Crowder, of Leeds England.

Theron Colegrove a Charter member of the I. D. A., and ex Sparks! on the Tug H.C. Cadmus writes he is now attending Capitol Radio Engineering Institute in Washington, D.C. this winter. He can be reached at 1652 Newton St. N.W. Washington, D.C. (Best of luck to U OB --Ed)

Mr. J.C. Tourle, Laindon, Essex, England has now added a veri' from LR3 to his other dx'ing Laurels. It was in answer to a report of last Feb. (It seems as tho the B.A. stations are beginning to verify).

Evan B. Roberts, Danvers, Mass. says "Toulouse, Rome, Milan, Turin, and Fecamp are already coming in R7/8. Best bet at present is Toulouse 6-6:30pm EST. LS2 is regular from 6:30-7:30pm EST. LR5 9-10pm EST. YV1RC heard easily 6-9pm. All the stronger TP's are coming thru now. Also got a good log on TGW Sun am"

Robert Hamilton, Ayrshire, Scotland, in renewing his sub says "I think the I.D.A. is great, and that goes for my fellow dx'ers in this radio club. If I got the same value from every 5/- I spend I should be more than pleased. The IDA is undoubtedly the best 5/- worth I get in a year. (Thanks! mightily Bob)

Bill Ellis, Hughson, California, the hard working Director of the 2nd IDA dist. sends me the first copy of the "I.D.A. Dist # 2, Bulletin," which contains news of interest to every IDA member in that dist, and is sent free except for postage. Bill says his goal is 100 new IDA members for that district, and I wouldn't doubt it a bit. He issues a challenge to other dist's (VFB Bill, and best of luck -Ed)

Alan Hunter, of "Amateur Wireless" London, and C.K. McConnan, student at Liverpool University, England are the latest recruits to the already distinguished group of I.D.A. members serving on the F.A.D. under Mr Randolph Hunt's direction.

To the right we have Leslie G. Mitchell, Nottingham, England, Amateur Photographer and member of the IDA and RSGB.

## Senorita Rosa Hernando, announcer at OAX, Lima, Peru

says "I wish to express my gratitude and at the same time show my approval of the great Crusade of Good-Will in America, and my offer to work with you and my good friend Sr. Jorge Vargas Escalante."

C.H. Mann, Cambridge, New Zealand, Reception of US stations poor here. The only ones audible are KFI, KGO, KPO, KOA, WLW, KNX, KHJ, XEW. KOA is no doubt the best. LS2 has been heard with great volume. I logged VUB in Bombay, India recently on 855kc in the early morning.

A Manchester, England Chapter of the IDA seems to be a prospect for the near future, thus beating London to the first British branch after all.

Congratulations to Walter B. McMenamy, of the DX SALES CO, distributors of PATTERSON, on the new set which, from all advance reports is at last the "DX'ERS DREAM COME TO LIFE." THE DX SALES CO. of Beverly Hills, Calif is giving IDA members a real break on the price of the new job, which we surely appreciate

## BUY THE NOVEMBER RADIOCRAFT!

## John M. Wheeler Lee-on-Solent, England

does his serious dx'ing when home on vacations from University. We are much indebted to Mr. Wheeler for maps of Gt. Britain locating I. D.A. members and also locating some of those hard - to - find towns. -- Ed.





## NEW MEMBERS

L.F. Reading, London N16, England. Has a O-V-2 Home made 3 valve.  
Herman Bieling, Glen Rock, New-York. Hammarlund 1933 Superhet.  
Roy Redman, Hamilton, Ontario, Canada.  
Thos. J. Taaffe Jr., Elmsford, N.Y.  
Russell Bills, Elkhart, Indiana. Grunow #901, 7 tube Super for SW.  
Alex McArthur, Cowdenheath, Fife, Scotland. Meteor SG, 3V, All-wave.  
Alex Arthur, Harbour, Dundee, Scotland. Has Murphy & RL SW Converter  
Ernest M. Niven, Dunedin, New Zealand. Atwater Kent # 60 Super.  
Charles Lebouef, North Grovesnor-dale, Conn. Majestic # 90.  
Joaquin T. Russe, Provincetown, Mass. Majestic # 360, 12 tube.  
Wm. Schumacher, Ellis, Nebraska. Has an Atwater Kent #711 All-wave.  
Thos F. Goodman, Omaha, Nebraska Zenith # 725, 8 tube 1934.  
Edward Coristine, Westmount, Mon-treal, P.Q., Canada. Brunswick Super.  
Carl Forestieri, Bronx, New York City. Zenith 35PX- AK 711T.  
Thomas Perkins, Danvers, Mass. Has a Scott 12 tube deluxe.  
W. Lay, 48 Harsuett Rd, Colchester England-- 2 Tube D.C. Homebuilt.  
G.A. Connor, 1097 Broadway, West Somerville, Mass-- 15 tube Scott  
Albert J. Bartholomew, Bradford New York, --1933 Model Midwest.

## WORLD RADIO RESEARCH LEAGUE

The I.D.A. strongly endorses the W.R.R.L. for any dx'er who is interested in radio phenomena and scientific research. Send your name and address in today for enrollment, to Ralph Stranger, Hon. Sec. of W.R.R.L., C/o Editor, World Radio, Broadcasting House, Portland Place, London W.1, England. There is no fee

The second problem of the WRRL is the study of phenomenon of fading; members of the WRRL have each adopted a number of stations which are easily received, and these are kept under daily observation.

When you start listening to a station watch for the first minimum signal strength. Note the time of this occurrence. Note the time of the second minimum signal surge. Put down the exact period of time between these two fades. Do this successively ten times. Then take the average of these time intervals. Then divide this time interval by the wave length of the station under observation.

## GRUNOW All-Wave Model 1151

A GRUNOW 11 tube A.W. receiver has been sent to HQ for our honest opinion on the basis of a careful test.

This set has now been under observation exactly 2 weeks.

It has been used in connection with an ordinary Inverted L aerial. Results on a Doublet, or a Double-Doublet would no doubt have been proportionately better.

Averaging less than 2 hrs. a day at the dials the following S. W. stations outside of the USA have been logged at fair to good IS strength: GSA-B-C-D-E-F-G, DJA-B-C-D. Pontoise, EAQ, CT1AA, PHI, RNE, RKL, PRADO, HJLABE, YVLR, YV3RC, YV5RMO, XEET, COC, HC2RL, HJ5ABD, PRF5, TIEP, CJRX, CJRO, VE9GW, OPM, JFV, JVM, JWN, WNC, TGF, YVQ, LSQ, LSX, LSN, DFB, CJA7, HI70, LUSDR, LULPB, HCLFG, XIG, WLOXA.

Although no early morning tuning was indulged in on several occasions LS2, LR8, and LR3 all of Buenos Aires were identified on the regular BC band as well as numerous Cuban and Mexican stations. Several times stations were identified on every channel in the early evening.

The receiver is attractive in appearance. It has an airplane dial with fast-slow gears for tuning by pushing in, or pulling out the knob.

The tone control has an even gradation from deep base to high treble. By turning this control to the left the beat oscillator is placed into action. This was found to be a great aid in tuning in new stations and tuning to the exact peak of the carrier wave.

The third knob is a combination switch and volume control.

The receiver has performed well under conditions poorer than average.

Its long points are (1) Very low noise level (2) Ease of tuning (3) Extreme stability due to a good A. V.C. (4) A highly usable degree of sensitivity (5) Adequate selectivity (6) Accurate calibration. --Ed

CAPT. HALL'S  
SHORT WAVE CORNER.

NOTE: Capt. Horace L. Hall will need no introduction to S.W. Dx'ers. He will contribute this page each month and will help in a monthly revision of our SHORT-WAVE STATION LIST. Capt. Hall will be pleased to get your contributions for this page, and all S.W. items of interest or S.W. Tips will be acknowledged by the "Skipper." Address these to Capt. H.L. Hall, 1642 York Ave., New York City --Ed.

"Kia Ora, or 'hello' short wave fans. Here we are off to a start. The station list which will be a regular feature of this section will grow from month to month, as we pick up new stuff and as our readers are kind enough to send us the proverbial 'dope' we will put new schedules in and run a side page of real interest. I hope!

First I want to thank the following gentlemen for writing me letters and promising full cooperation and help in this task of making long wave dx'ers also Short Wave Fans. Many BCL listeners have already been bitten by the bug as we see from this interesting letter from Stuart Walmsley, Los Angeles. HE says 'Here in L. A. South-Americans are commencing to come in. TIEP, whose slogan is, "The Voice of the Tropics" and OALAC on 51.50 meters are also heard. For many months I have heard a station on about 49.02 meters daily from 3 to 7 am PST, the language is very puzzling, I wonder who it is? RV15 heard from 4 to 6am; PLV 6:45-7am; JVF 19.2 meters 6-8pm; JVM 27.93 meters 6-8pm, and PLE 15.93 meters 4-6 pm on Sundays.

Now there are a few Asiatics to go after for we dx'ers in the East Mr. John DeMyer sent us a fine business letter and it was sincerely appreciated.

Now let us see what we have bagged in the last few weeks. A deal of interest seems to be centered in the foreign amateurs who are pounding in on the ever active 20 meter band. Capt. Bartlett's Schooner WLOXA whose transmitter is active around 6pm every night has very interesting programs. One in particular being the broadcast of the native Eskimos in Labrador. The distance involved is not so great but the entertainment was

most excellent.

COC, Havana, Cuba, is back having rebuilt their station which was burned down several months ago. TIEP on 44.7 meters is heard every night as late as 3 am. What are these South American stations planning every night, or I should say morning (2 to 5am) as they can always be heard endlessly talking about what? Barranquilla, Prado, Costa Rica, and a Mexican ham keep it up by the hour. Help! Help! You fans who understand Spanish.

Well, Well TLNHR 30.99 meters is back and his modulations is logged for the first time on Sept 17. We have heard him every night since, from 7 to 8 pm.

The Japs are playing us false although Walter Weaver of Filer, Idaho says in his letter that they roll in on several wave lengths. Here they are, so lets get busy. Mr Filer states 'Skipper don't miss JVM transmitting play-by-play description of the baseball games in Tokyo, from 0530 to 0730 GMT. Graham McNamee and Harry Von Zelle better turn in their suits because the boy from Nagasaki puts them on the bench. A Japanese boy stepped up to the bat Sat. Nite, the ball was pitched--CRACK went the bat and he lit out in the direction of Manchukuo--it was a home run and the announcer got so excited he yelled HOMEY, HOMEY!, HOMEY!, and kicked the Mike over--pandemonium reigned--locomotive whistles, cat calls, and general boogies were the order of the day and to top it all off the fire siren blew and they all started to sing-- Ona strike two ball, One strike two ball, and the boy from Nagasaki forgets whether his own mother was Japanese or English and in tense moments talks a language all his own--Twoa strike tree ball, twoa strike tree ball, Nagasaki, Kemikawa, Peoria and Jabber, Jabber--tree strike out--well anyway that's the way I heard it." JVF was pounding in at R9 tonight at the usual time from 0100 to 0211 GMT. I picked up another new Jap on 30.4 meters last Thursday, and Friday from 0600 to 0630 GMT. I suppose it was JYS at Kemikawa. There is another Mexican on the 31 meter band relaying XEAT, and XEAL has gone off into space as the performers were not paid." HALL

## SHORT-WAVE BROADCASTING STATIONS

DIAL.	METERS	KC/S	CALL	STATION	TIME (E.S.T.)
16.86	17790	GSQ	DAVENTRY, England.	Daily 6-8:30am; Sun 5-8:30	
16.88	17770	PHI	HUIZEN, Holland M, Th, F.	7:40-10am; S, Su 7:40-11	
16.89	17760	DJE		Daily 11:30am-2pm.	
19.68	15240		PONTOISE, France	Daily 7:30am-11am.	
19.73	15200	DJB	ZEESEN, Germany	12:15-2am; 4-5:30am; 8-11:30am.	
19.82	15140	GSF	DAVENTRY, England	6-8:30am; 8:45am-12:45pm.	
19.84	15123	HVJ	VATICAN CITY, Italy	5-5:15am; Sat 10-10:40am.	
24.83	12082	CTIOT	Lisbon, Portugal	Sun 6-8am; Thur. 3-5pm.	
24.88	12060	PDV	Kootwijk, Holland	Telephone Irregular.	
25.00	12000	RNE	Moscow, U.R.S.S.	6-7am, 10-11am; Sat 11-12pm	
25.25	11880		PONTOISE, France	11:15am-6pm.	
25.29	11860	GSE	DAVENTRY, England	Daily 8:45am-12:45pm.	
25.51	11760	DJD	ZEESEN, Germany	12:00n-4:30pm, 5:30-10:30p	
25.53	11750	GSD	DAVENTRY, England, 1:15-5:30pm, 1-5:30pm, 6-7pm.		
25.63	11705		PONTOISE, France	6:15-9pm, 10pm-12midnight	
29.04	10330	ORK	Ruyssede, Belgium.	1:45-3:30pm.	
29.15	10290	DIQ	Nauen, Germany	Telephone Irregular.	
30.40	9870	EAQ	MADRID, Spain	Sat 12n-2pm Daily 5:15-7p	
30.52	9830	IRM	Rome, Italy	Telephone on afternoons.	
31.25	9600	CTIAA	Lisbon, Portugal	Tues-Fri 3:30-6pm.	
31.27	9595	HEB	GENEVA, Switzerland	Sat 5:30-6:15pm.	
31.30	9585	GSC	DAVENTRY, England	Daily 6-8pm.	
31.38	9560	DJA	ZEESEN, Germany	4-5:30am, 8-11:30 am.	
31.55	9510	GSB	DAVENTRY, England 1:15-5:30pm, 10:45a-12:45pm.		
38.47	7800	HBP	GENEVA, Switzerland	Sat 5:30-6:15pm.	
43.86	6840	HAT2	Budapest, Hungary	Irregular.	
45.38	6610	REN	Moscow, URSS	Mon, Wed, Fri, Sat 4-5pm.	
48.94	6130	LCL	Jeloy, Norway	Daily 11am-6pm.	
49.40	6072	OSR2	Vienna, Austria	Mon-Thur 9am-1pm, 2-5pm.	
49.50	6060	OXY	Skamleback, Denmark	Daily 1:00-6:30pm.	
49.59	6050	GSA	DAVENTRY, England	Daily 7-8pm.	
49.83	6020	DJC	ZEESEN, Germany	12n-4:30pm, 5:30-10:30pm.	
50.00	6000	RAJ25	Barcelona, Spain	Sat 3:30-4:30pm.	
50.00	6000	HV59	Moscow, URSS	Daily 4-6pm.	
50.26	5969	HVJ	Vatican City, Italy	2-2:15pm, Sun 5-5:30am	
58.31	5145	OKIMPT	Prague, Czechoslovakia (Experimental)		
70.20	4273	RV15	Khabarovsk, URSS	Daily 1-9am.	

NOTE: The schedules of some of the stations listed will undoubtedly change when Daylight schedules are dropped. Complete revision next G.C.

## A S I A

16.50	18180	PMC	Bandoeng, Java	Telephone 3-5pm Irreg.
16.92	17730	HSP	Bangkok, Siam	4-6am Irreg. Telephone.
17.10	17540	WVY	Poona, West India	3-7am Irreg. Telephone.
19.66	15260	JVF	Nasaki, Japan	7-9pm. Irreg.
20.03	14980	KAY	Manila, Philippines	5-8am, 7-8pm. Telephone
25.02	11990	FZS	Saigon, French Indo-China	Telephone, Irreg.
27.93	10740	JVM	Nasaki, Japan	1:50-2:20am, 4-7:40am.
28.14	10660	JVN	Nasaki, Japan	5-5:40, 7-7:10, 9:40-9:45pm.
48.92	6130	ZGE	Kuala Lumpur, F.M.S.	Sun-Tues-Fri 6:40-8:40am.
49.42	6070	FKLWK	Bandoeng, Java	4:25-6:10am Except Sun.
49.50	6060	ZHI	Singapore, Straits Set.	M.W.Th. 5:40-8:10am.
49.96	6050	CQN	Macao, Macao	Mon-Wed-Fri. 7-9am.

## A F R I C A

23.38	12830	CNR	Rabat, Morocco	Sun 7:30-9am.
29.58	10140	OPM	Leopoldville, Belgium Congo.	9-10am Irreg.
31.61	9490		Tripoli, Tripolitania.	Phones Rome Irreg.
37.33	8050	CNR	Rabat, Morocco	Sun 3-4pm.
41.60	7210	EASAB	Santa Cruz, Canary IIs.	Daily Ex Sun. 5-7pm.
41.80	7180	CR6AA	Lobito, Angola	Wed-Sat 2:30-4:30pm.
49.50	6060	VQ7LO	Nairobi, Kenya.	11am-2pm, Tu 3-4am, Thu 6-7am
84.67	3543	CR7AA	Laurencio Marques, Mozambique.	M, Th, Sa 130-330pm

## SOUTH AMERICA

DIAL	METER	KC/S	CALL	STATION	TIME (E.S.T.)
19.43	15440		PRADO	Rio Bamba, Ecuador.	Sun 5-6pm.
25.73	11660		PPQ	Rio de Janeiro, Brazil.	Phone & Experimental
28.98	10350		LSX	Buenos Aires, Argentina.	Tu-Wed 8-10pm. Irreg
30.30	9900		LSN	Buenos Aires, Argentina.	(P) 9-10pm Irreg.
31.57	9500		PRF5	Rio de Janeiro, Brazil.	5:30-6:15pm
38.15	7865		OALAC	Lima, Peru	9-11pm Irreg.
40.49	7410		HJ3ABD	Bogota, Colombia	7-11pm
41.55	7220		HKE	Bogota, Colombia	Mon-Tues 9-11pm
41.60	7200		HJ4ABB	Manizales, Colombia.	8-10pm.
42.86	7000		HJ1ABE	Cartagena, Colombia.	8-10pm Wednesdays.
45.00	6660		HC2RL	Guayaquil, Ecuador.	Sun 5:45-8:15, Tu 9:15-11p
45.31	6620		PRADO	Rio Bamba, Ecuador.	Thur 9-11pm.
46.13	6500		HJ5ABD	Calli, Colombia	7-9:30pm.
46.60	6440		HJ1ABB	Baranquilla, Colombia	6-10pm.
48.00	6250		HJ3ABF	Bogota, Colombia	7-10:30pm.
48.78	6150		YV3RC	Caracas, Venezuela	4:30-9:30pm.
49.08	6110		YV2RC	Caracas, Venezuela	5:15-9:30pm.
49.20	6100		HJ1ABD	Cartagena, Colombia	7-9pm.
49.34	6080		CP5	La Paz, Bolivia	7-9pm Irreg.
49.42	6070		YV5RMO	Maracaibo, Venezuela.	5:15-9pm.
49.65	6040		HJ1ABG	Barranquilla, Colombia	
50.20	5980		YV1RC	Caracas, Venezuela.	
50.42	5950		HJ4ABE	Medellin, Colombia.	7-11pm.
73.00	4000		HCJB	Quito, Ecuador.	7:30-10pm.

## OCEANICA

31.32	9580	VK3LR	Melbourne, Australia.	3-7:30am Ex Sun 9-11am
31.28	9590	VK2ME	Sydney, Australia.	Sun 12:30-2:30am, 5-8:30am.
31.55	9510	VK3ME	Melbourne, Australia.	M 5-6:30am, Sat 5-7am.

## MEXICO-CENTRAL AMERICA-WEST INDIES

26.00	11540	XAM	Merida, Mexico.	Phones SDM 6pm Irreg.
30.99	9680	T14NRH	Heredia, Costa Rica	7-8pm.
31.25	9600	XETE	Mexico D.F., Mexico.	Evenings, Irreg.
32.09	9500	XDC	Mexico D.F., Mexico.	5-7pm.
44.71	6710	TIEP	San Jose, Costa Rica.	5:30-10pm Ex Sun.
47.50	6310	HIZ	Santo Domingo City, D.R.	5-6pm.
47.80	6230	HILA	Santo Domingo City, D.R.	Mon-Fri 7:30-9:30 pm.
49.80	6020	HIX	Santo Domingo City, D.R.	8-10pm.
49.90	6010	COC	Havana, Cuba	5-6pm.
49.92	6010	XEBT	Mexico D.F., Mexico.	To 11pm.

## UNITED STATES-CANADA

13.92	21540	W8XX	Pittsburgh, Pa.	Daily Noon-8pm
16.87	17780	W3XAL	Boundbrook, N.J.	Daily 10-4pm. Irreg.
19.56	15330	W2XAD	Schenectady, N.Y.	Daily 2-3pm.
19.64	15270	W2XE	Wayne, N.J.	Daily 11am-1pm.
19.67	15250	W1XAL	Boston, Mass.	Sun 10am-1pm.
19.72	15210	W8XX	Pittsburgh, Pa.	Daily 10-4:15pm
25.27	11870	W8XX	Pittsburgh, Pa.	4:15-10pm, Sat 4:15-11:45pm.
25.36	11830	W2XE	Wayne, N.J.	Daily 2-4pm.
31.28	9590	W3XAU	Philadelphia, Pa.	Daily 11am-6pm Irreg.
31.36	9570	W1XAZ	Springfield, Mass.	6am-Midnight.
31.48	9530	W2XAF	Schenectady, N.Y.	6:30-10pm.
46.69	6430	W3XL	Boundbrook, N.J.	Experimental.
48.83	6135	CJRO	Winnipeg, Manitoba.	
48.86	6140	W8XX	Pittsburgh, Pa.	4:30-pm-12:30am
49.02	6120	W2XE	Wayne, N.J.	6-11pm.
49.18	6100	W3XAL	Boundbrook, N.J.	Mon-Wed-Sat 5pm-1am.
49.18	6100	W9XF	Chicago, Illinois	
49.22	6090	VE9GW	Bowmanville, Ontario.	
49.34	6080	VE9HX	Halifax, N.S.	6-10pm.
49.34	6080	W9XAA	Chicago, Ill.	Daily 2-3pm, Tu-Th-Sat 2-12pm.
49.50	6060	W3XAU	Philadelphia, Pa.	8pm-1am.
49.50	6060	W8XAL	Cincinnati, Ohio	10pm-1:30am, 6:30-7pm.
49.67	6040	W1XAL	Boston, Mass.	4:45-6:15pm, Sun 6:30-8:30p



## SHORT-WAVE PAGE

E.S.T.  
Nov. 24 Sat. 11pm 49.92m 6010kc Mexico D.F., Mexico. **XEBT**  
(1) International Good-will BC featuring IDA member Enrique Guerrero lyric tenor, and a Mexican Variety hour  
Dec. 16 Sun. 5-6pm. 38.47m 7800kc **RADIO NATIONS, GENEVA** **HBP**  
(2) THE GREAT FEATURE SHORT WAVE BROADCAST OF THIS SEASON DIRECT FROM THE LEAGUE OF NATIONS. --SURPRISE PROGRAMME, ALL CLUBS AND PUBLICATIONS PLEASE COPY--Ed.  
Dec. 21 Fri. 1-3am 49.35m 6079kc Bogota, Colombia. **HJN**  
(3) The new SW Xmttr of our old favorite HJN.  
Address: HJN, Ministerio de Correos Y Telegrafos, Bogota, FAD Members. (1) S. Walsley-Guerrero (2) R. Kure (3) Robt. Weber

## FLASHES!

The URSS 1934-35 Series of B.C.s to the U.S.A. will start in October being transmitted thru RNE 25m and by RRI 39.97m; handled here by the CBS. Successful tests have been carried out at 1:30pm EST so this hour may be utilized on Sundays. This data from the Soviet Govt. --Ed.

NEW S. W. STATION FOR MADRID has been ordered by the Spanish Govt. to be called "Hispano-American" for a name. It will be 20kW, and will operate on 13.92m and 31.58 meters

US Consul H. Playter in the Azores has informed Mr. Guy Bigbee that the only station in operation is **OT2AJ** owned by Joao Soares Jr., in Ponta Delgada, St. Michaels, Azores. It operates on 83.3m/3600kc with 50w and its sked is Wed-Sat- 5-7pm EST

**TRIPOLIS** (Italian N. Africa) is the name of a new and powerful station on 31.61m/9459kc received while testing with Rome- Monte Celio. The tests take place 11am-1pm EST. No call given. (Hans Priwin, Copenhagen **QR2-Vienna**-49.4m/6072kc is now transmitting the Viennese Medium wave stations daily ex. Sun from 3 am to 7pm EST Mr. Priwin continues. A metronome can be heard as an interval signal.

**LCL** may be heard on their 21.45m/13985kc schedule.

AN IMPORTANT GOVT. COMMUNICATION FROM FRENCH INDO-CHINA states that 1. Long wave **P2A** installed at Saigon is practically no longer used. 2. Stations **P2R** and **P2S** are Short-wave stations installed at Saigon and having commercial communications with France, Syria, Madagascar Reunion, Caledonia, Tahiti, East Indies, P.I.s, Hongkong, Shanghai, Tokyo, and San Francisco (Bollinas) 3. **P2O1-P2O4-P2Q** are S.W. Xmttrs installed at Hanoi which communicate with France, Yunnanfan, Kouang-tcheouwan, Hongkong, and interior IC

## FEATURE I.D.A. S.W. BROADCASTS

4. Indo-China has connections with U.S. thru Bollinas **KEL-KEE-KES-KLL**. Radio- Telephone experiments are now being carried on. --Ed.  
**CR6AA**, Lobito, Angola, Africa may be heard according to R. Tomlinson on Wed-Sat 2:30-4:30 pm on their W.L. of 41.8m/7180kc. The owners are very anxious to receive reports which should be addressed to Estacao Radio Difusora **CR6AA**, Caixa Postal # 118, Lobito, Angola, Africa.  
S.W. Tips from Walter McMenamy, of Beverly Hills, Calif. states "2TJ, 49m/6,120kc on 1-3am PST--ZGE on 48.92m/6130kc on Sun-Tues-Fri from 3:40-5:40 am PST--**PK1WK** on 85 and 96m 1:30-2:30am PST--**VQ7LO** 49.50m 8-11am PST."

45m Mystery Station is **TIEP**, "La Voz de los Tropicos", San Jose, Costa Rica according to J. Shanks, and J. DeMyer. **TIEP** 44.71m/6710kc is on usually 7-10pm EST although he sometimes uses the Ham Call **T12EP** far into the night.

The Rio de Janeiro station on 31.58m/9500kc-5:30-6:15pm EST at last announces its own call letters in English as **P-R-F-5**, the Companhia Radio Internacional do Brasil-- So we were wrong--

**HJLAB**, Quisquilla, D.R. on 46.2m/6520kc was heard from 5-6:30pm EST recently by John Shanks. He also reports the new Colombian **HJLABG** of Barranquilla on 49.65m/6040 kc is better than **HJLABB**.

**QAHAD** continues to come in on 51.90 meters. He announces in English.

STOP PRESS!  
El Bullard, CPC Chairman of the CDXR writes **VOGY**, St. John's, Newfoundland will run a series of DXs every second Sunday starting Oct-14th, from 1-5am E.S.T. They are on 840kc, with 400 watts. --Thanks El.

## SOCIETY OF WIRELESS PIONEERS

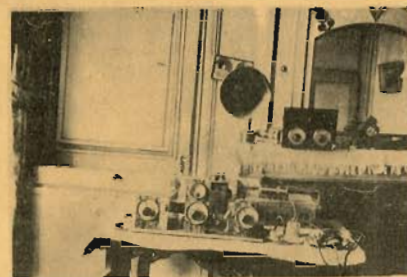
The S.W.P. is the only Honorary and International Society which is open only to those 'Old Timers' in Short Wave, and High Frequency work who can look back on ten or more years of experience along these lines. An application must be filled out as proof of eligibility which, if accepted will, together with enrollment fee of \$1.00 make you a 'LIFE MEMBER', without further fees. You 10, and 20 year OM get in touch with Mr. M. Mickelson, P.O. Box 3754, Bloomington Station, Minneapolis, Minn. who is the Vice-President in charge of the S.W.P.

How many of you brothers are interested in the proposed 20 meter fone relays and sked for WW contact of S.W.P. Members. Let's hear from all of you.

The S.W.P. has been highly honored by brothers Cockaday, and Taylor inasmuch as we have been chosen as the first of the few organizations which have been asked to contribute regularly to the DX Corner of RADIO NEWS, as an ASSOCIATE MEMBER SOCIETY.

"If you have corns on your ears from tuning in on the European Trans-Atlantic tests try Bunko Corn Cure on sale at all radio stores. (Advertisement)"

We want to welcome OM Thomas J. Taffe Jr., 29 Valley Ave., Elmsford, New York into the SWP. Tom has been in the S.W. end of things for about 16 years and at the present time for a Dx'ing layout uses two small Spartans, 1 Radiola 42, 1 Kolster International, and a three tube home made regenerative S.W. rig. We're glad to have you OB.



Above is one of the receiving sets of the Vicome Jean de la Brosse, SWP member of Paris. This particular receiving set is more than six years old OM Brosse says.

Ye VP M. Mickelson has been getting in a little dx'ing of late, Sept. 2nd he spent nearly 24 hours straight at the dials and tuned in all continents except Africa.

Abt the only new stations heard were the 20 meter phone boys and girls. Has anyone heard one of the 20 meter boys calling **K4SA**, and signing himself as **OM4BZ**? I think he said his QRA was Guam, but I do not find it in any of the Call Books. **PHI** comes in very nicely now on 16.88 meters but they have a new announcer. I have not been able to hear **ROME** all summer except for a few times I received **IRM**. I'm having poor luck on the Japs, as I cant get a veri' thru. **HILA** was received at 12:35am testing on 47.80 meters. I heard a station in Lima, Peru on 36 meters at 11:30 pm but no call letters were distinguished. Another Australian was snared at 2:10am on 43 meters, as he came in **Q4/R5**. I think his call was **VK3CX**. Anyone else hearing this station please give me his correct QRA. Ships **IBLI-FNSM-DHDL** all came thru nicely. **ORK** has been heard here but with very poor quality. **PRADO** puts on a very beautiful programme on Sunday afternoons on the 19 meter band. My only good catch this summer was **VPD** at 8:53am of July 1st, on about 22 meters. So far I have not heard from them.

SWP member Oliver Amlie, has promised us an article in the near future on his new AC 'THREE TUBE' **AMLIE SHORT WAVE DX'ER**! This article will prove of interest to a lot of us OT's who still get a big kick out of building our own.